



力麗企業股份有限公司
LEALEA ENTERPRISE CO., LTD

Code.1444

2024 INVESTOR CONFERENCE



Investor Conference

- ▲ DISCLAIMER:

This PPT encloses the info. of the company's internal and external data and includes the business performance, financial statement, and sales development.

Lealea doesn't enclose any financial prediction. There might be variation or difference from actual situation if Q&A involves any predictive sales, industrial or financial matters. This is subject to the market demand & supply, price variation, competition, international economy, exchange rate or downstream/upperstream...etc.

- ▲ Company prospection in PPT is based on Lealea's point of view, and it may vary by time. Lealea is not responsible for any instant update nor reminder.

Agenda

- **Company Profile**
- **Capacity**
- **Performance**
- **Future Development**
- **Status of LIBOLON Indonesia**

Strategy from Lealea

- Established Year: : 1979
- Capital: NT 9.955 billion
- Chairman : James Kuo
- Employees : 922
- I.P.O: 1990 , TWSE (Code.1444)



Production Capabilities

LIBOLON

Changhua Polyester Polymerization & Spinning Plant Factory

CP process

CP1: 7000 T/Month ; CP2: 9000 T/Month

BP process

BP1: 300 T/Month ; BP2: 300 T/Month

BP3: 1200 T/Month

SSP(Bottle grade) 9000 T/Month

BR(Bright chip) 7000 T/Month

TP(Recycle chip) 1200 T/Month

PET Spinning Plant chip spinning
4700 T/Month

Changhua DTY Plant Factory

Changhua DTY
Plant Factory:
5000 T/Month

OEM DTY: 150
T/Month

PT. INDONESIA LIBOLON FIBER SYSTEM

Staff : 952

Preparation machine :
8 sets

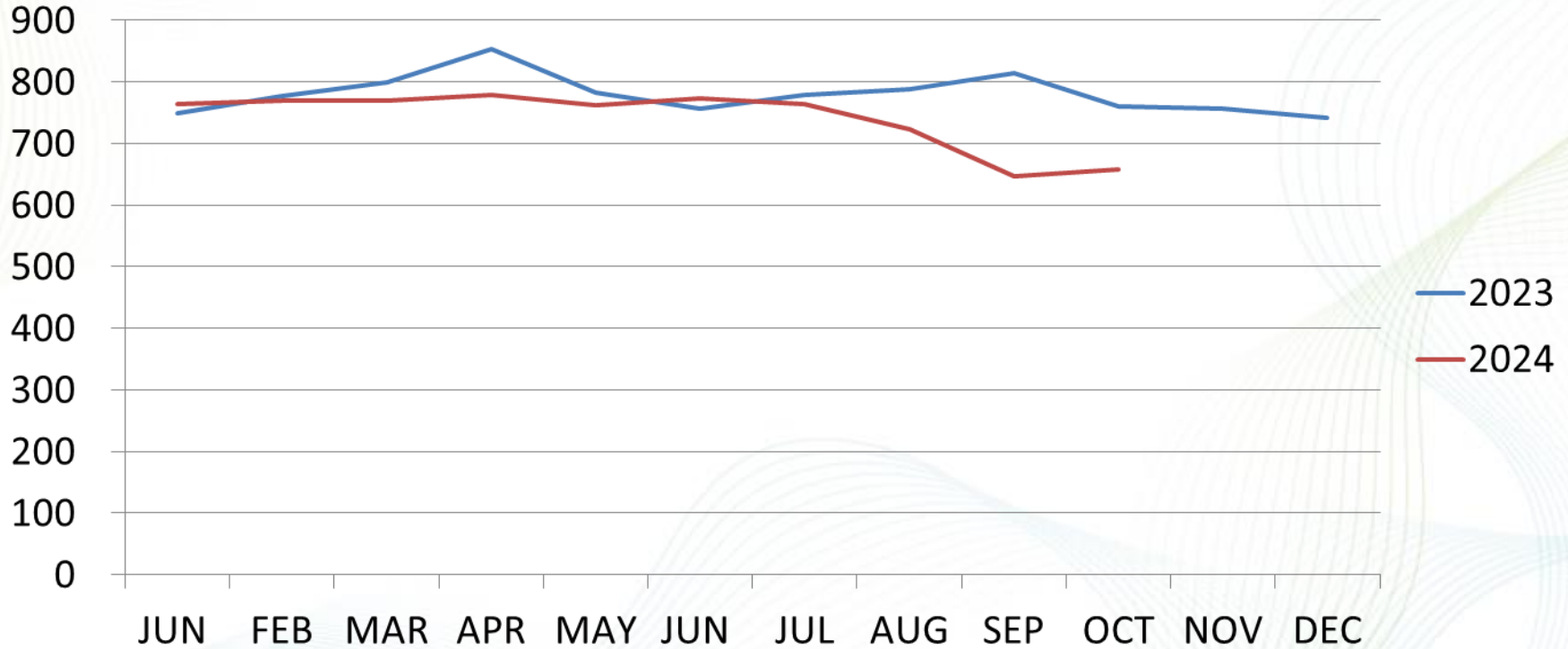
Weaving: 691 sets

Knitting: 116 sets

Dyeing capacity :
400million yards per
month

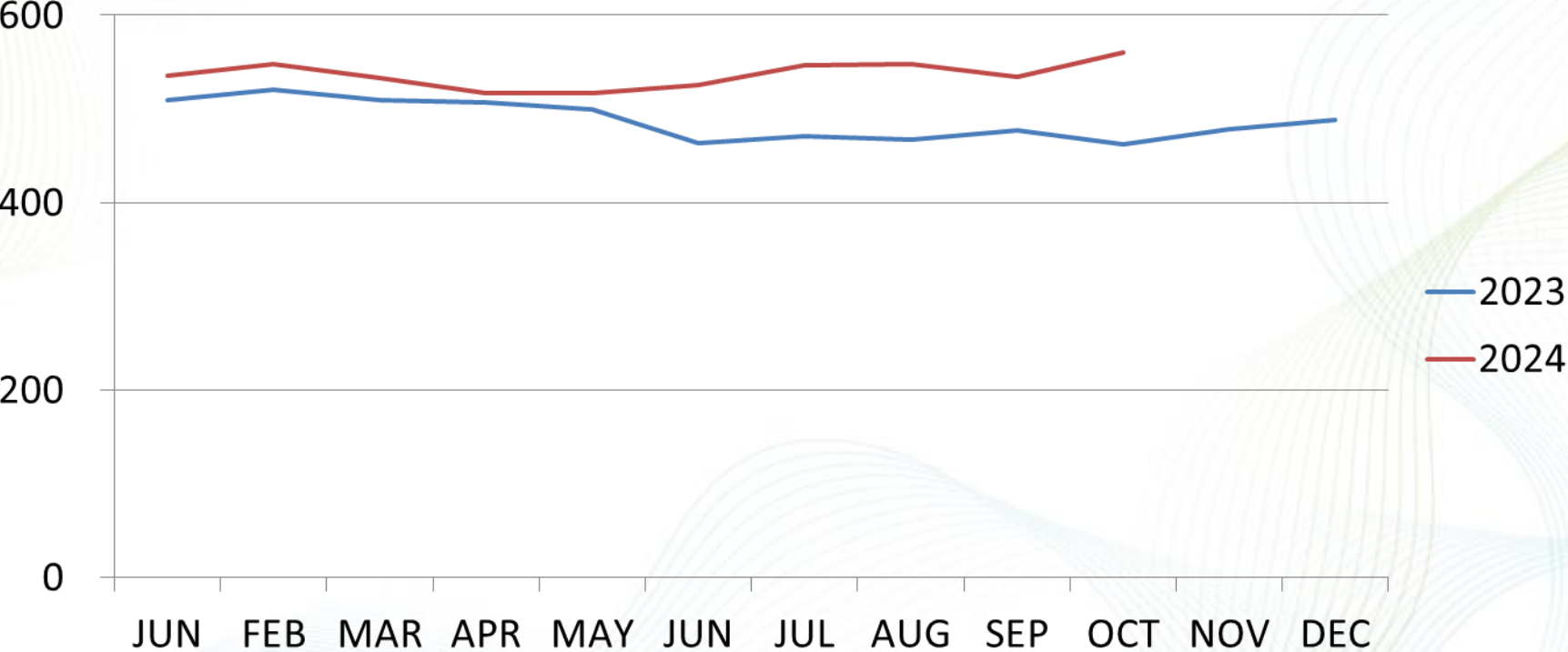
PTAMaterial Trend-PTA

Unit: US dollar



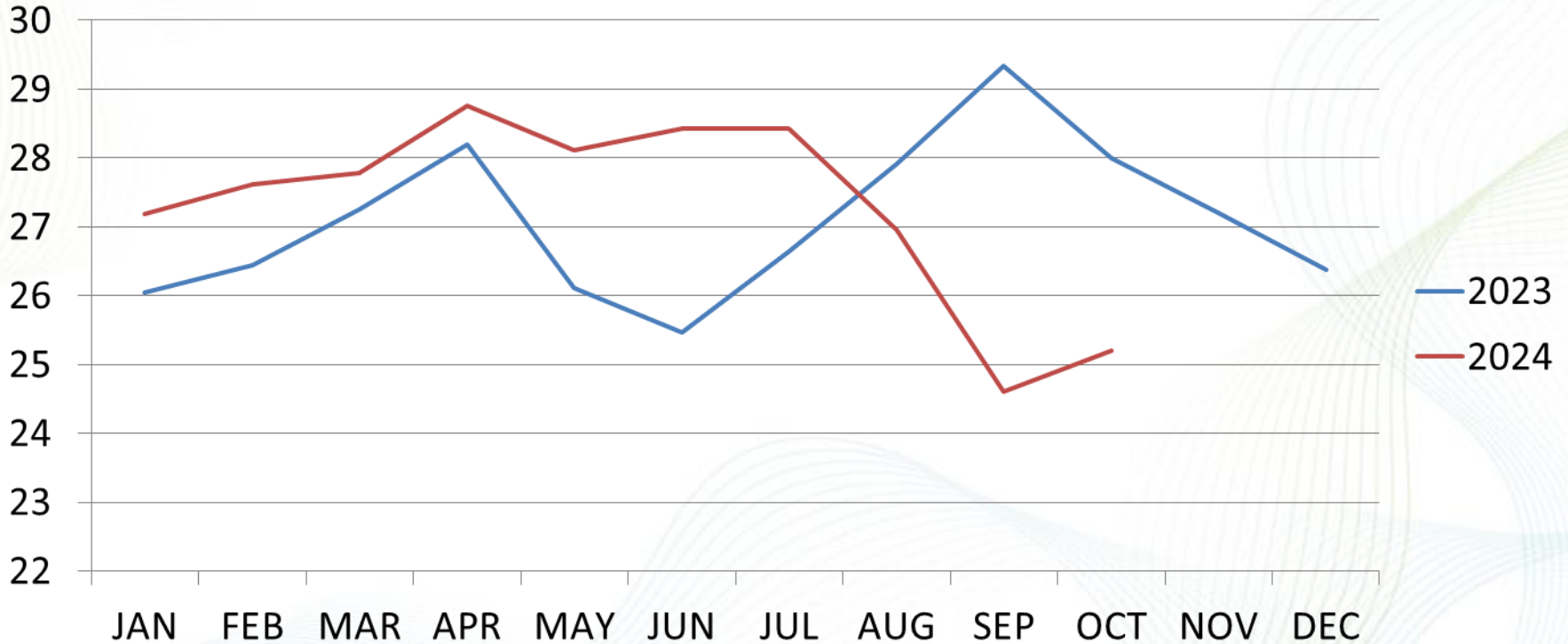
Material Trend-MEG

Unit: US dollar



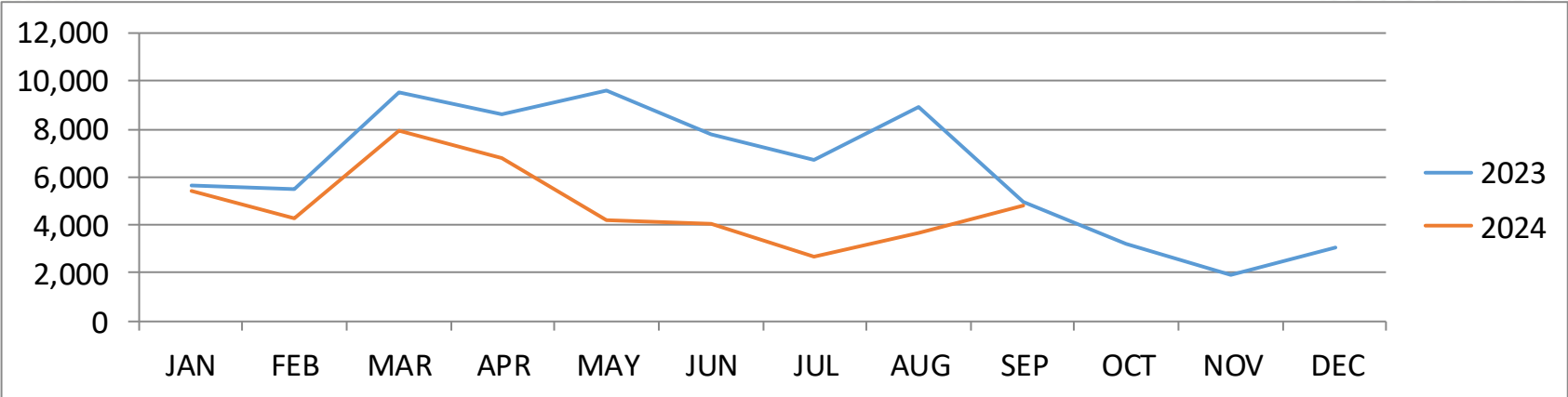
Material Trend-Polymer

Unit: US dollar



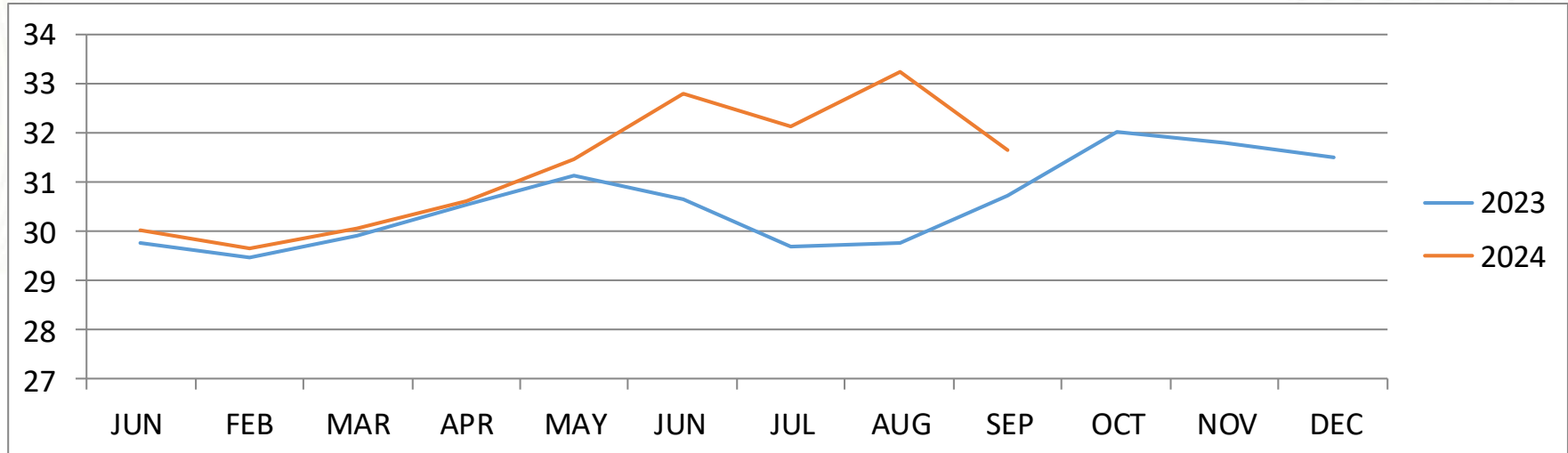
LL BOTTLE CHIP – Sale Volume

Unit: tons

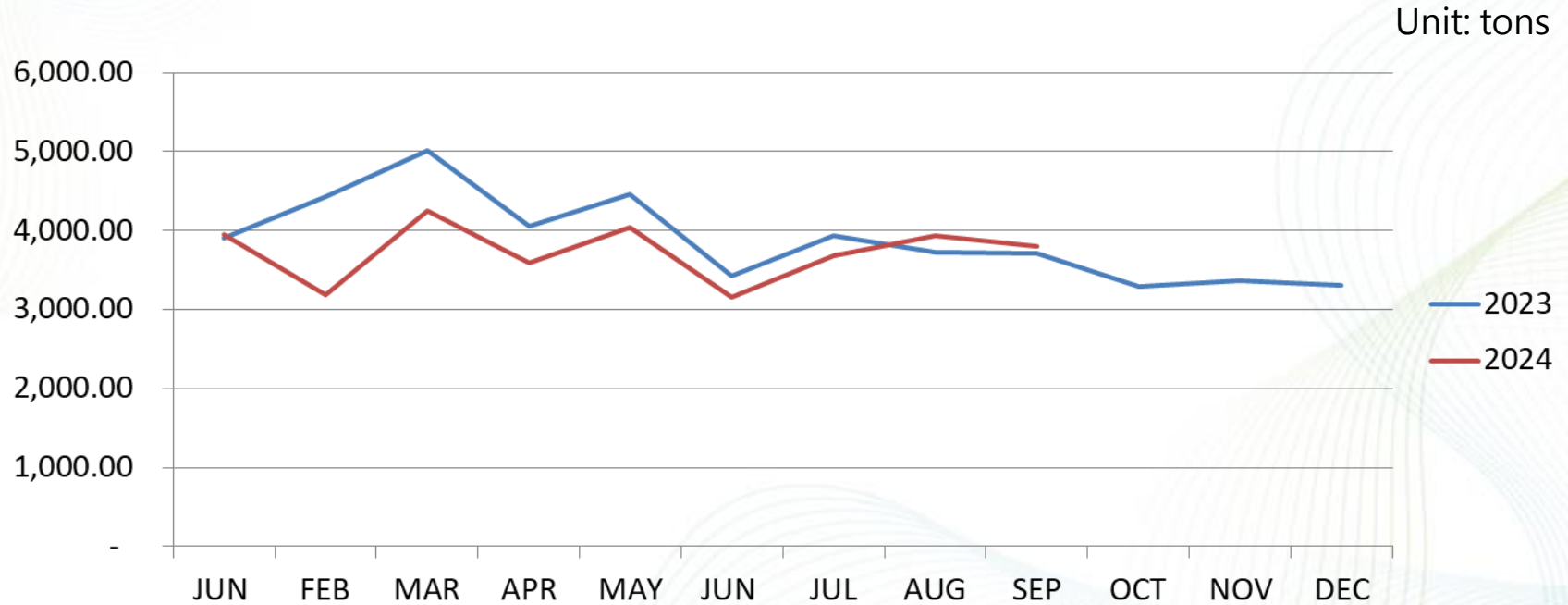


LL BOTTLE CHIP – Sale Price

Unit: NT\$/kg

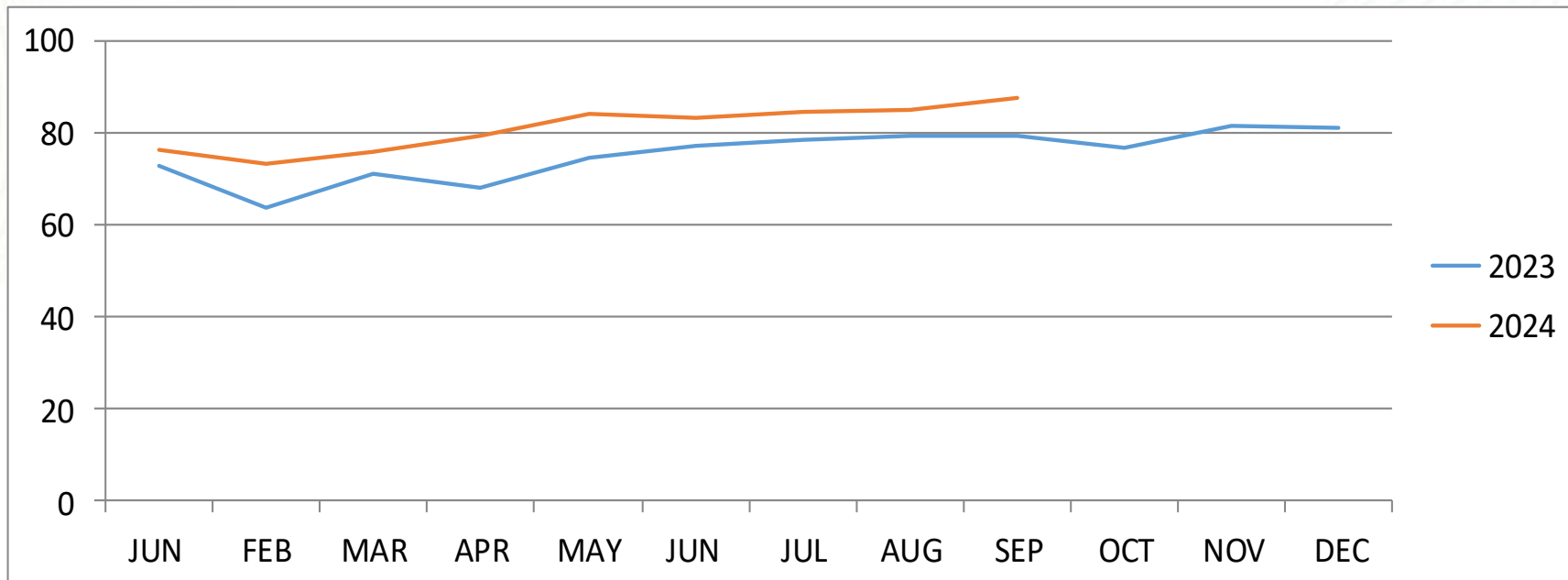


LL DTY– Sale Volume



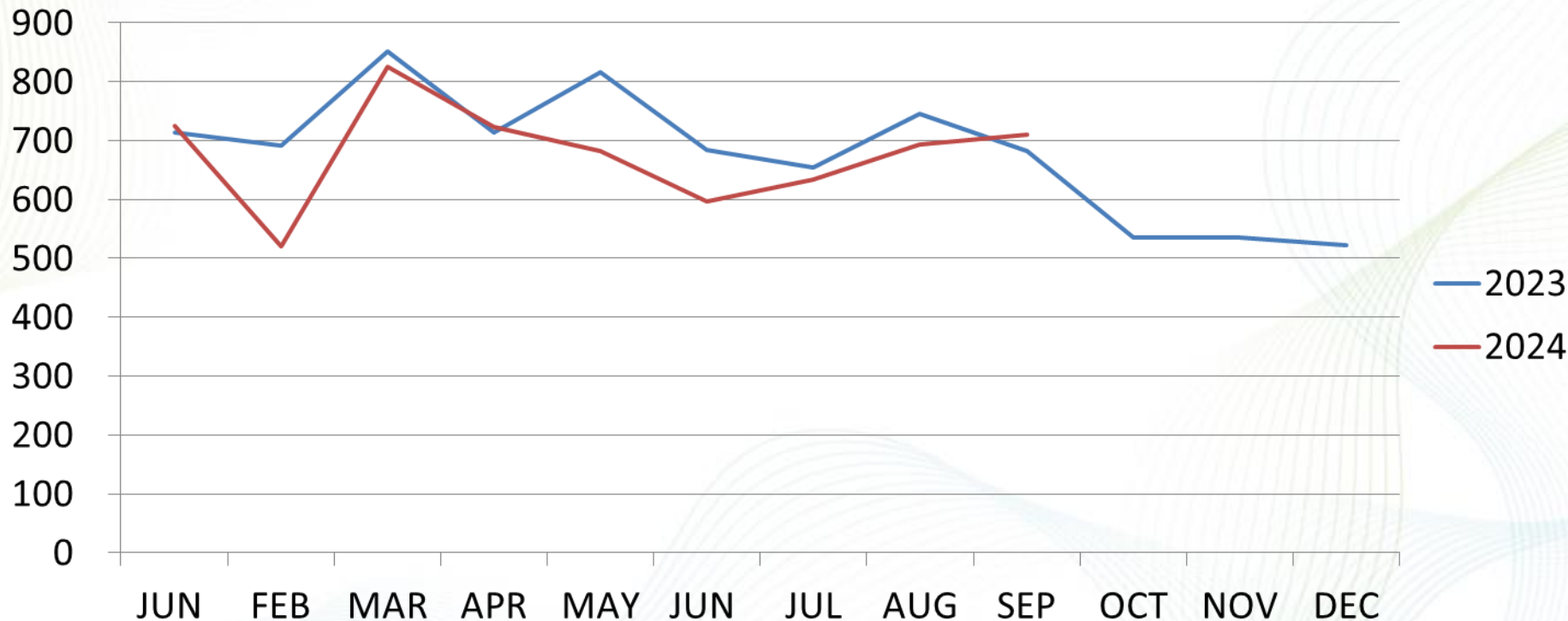
LL DTY– Sale Price

Unit: NT\$/kg



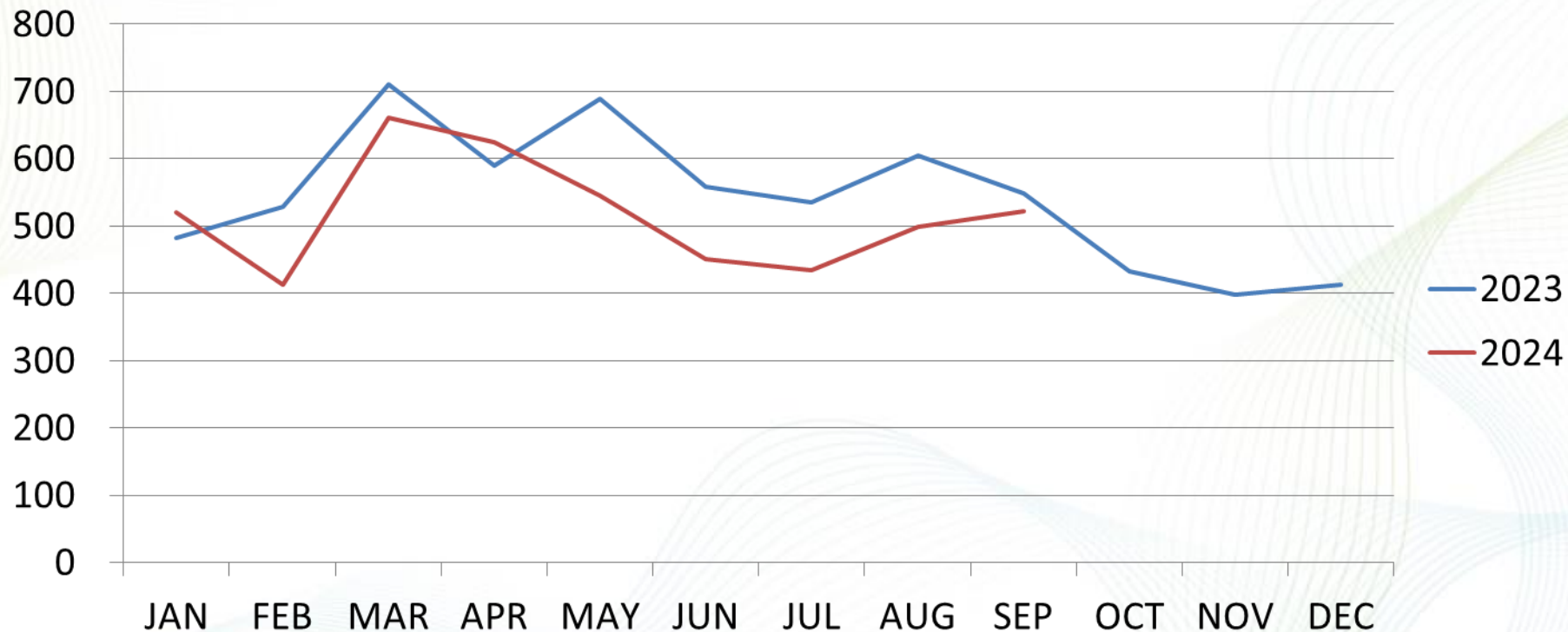
LL – Consolidated Revenue

Unit: Million NT\$



LL – Revenue of mother company

Unit: Million NT\$

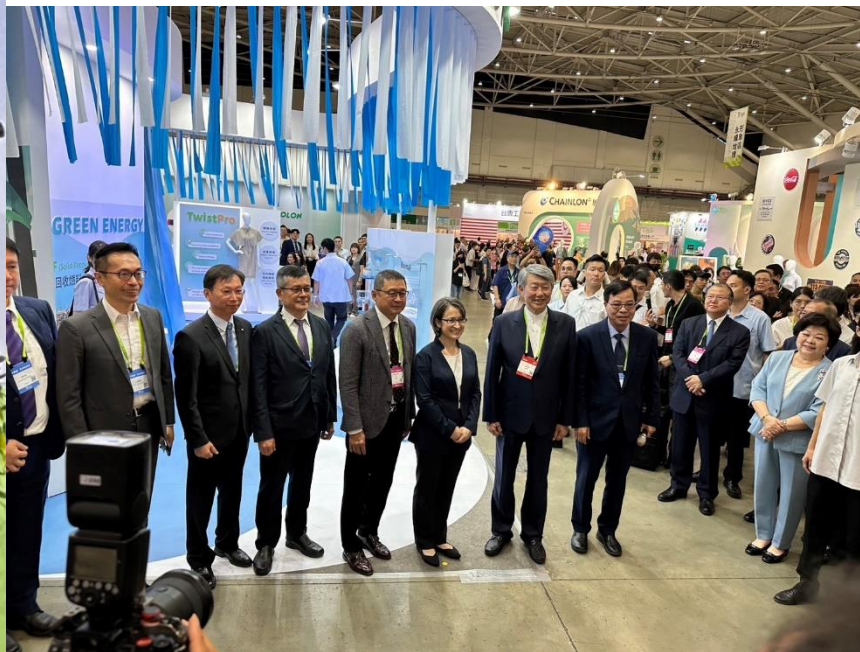


Sale Volume

Year/Item	DTY(ton)	Chip(ton) Textile Grade	Chip(ton) EP Grade	SSP(ton) Bottle Grade	POY(ton)	Total (tons)
2024	33,599	1,401	8,711	43,716	3,129	90,556
2023	36,668	6,393	5,789	67,425	2,049	118,324
Comparison	-3,069	-4,992	2,922	-23,709	1080	-27,768
%	-8.37%	-78.08%	50.47%	-35.16%	52.7%	-23.46%

* Period : Jan. – Sep.

2024 TITAS



FUTURE DEVELOPMENT

1. Keep to drive and implement ESG management and Net-Zero carbon emission. To expand the installation of Solar Energy in the factory.
2. Enhance the product development and market promotion in Electronic business department
3. Transformation on fine denier textured yarn and functional high-value yarn
4. The Joint Venture(JV) SFR factory is under construction by Chang-Hwa Fangyuan plant and Remondis(Germany). (kick-off in 2024)
5. Utilize the idle plant warehouse and for leasing externally.

Status of LIBOLON Indonesia

1. New Fabric mill (Plant 2 with 306 weaving machines) was completed in July, 2024 and put into production.
2. New Dyeing mill (Plant 2 with 3 sets of setting machines and 7 sets of Dyeing tank with 1200kg/tank) was completed in October, 2024 and put into production.
3. To meet the required brand responsibility and global Net-Zero carbon emission, 2 sets of Natural Gas Boiler (Steam and Dowtherm) are completed.
4. To utilize the disused land and aggressively bring in the investment of strategic partners.

2024 Taiwan-Indonesia Textile Industry Meeting is ended successfully. President is on behalf of Taiwan group giving the souvenir to API (Indonesia Textile Association). Vice-chairman →



Follow us



Q&A